

55 years of
excellence



Pharma Cold Room (2°C to 8°C)

Temperature Accuracy: $\pm 0.1^{\circ}\text{C}$

Temperature Uniformity: $\pm 2.0^{\circ}\text{C}$







•Cold Room

- Cabinets are designed for continuous operations with high degree of precision and uniformity of conditions with varied applications including storage conditions of the product, exposure to low temperature applications including storage of important reference standards.

The chamber are designed according to the ICH guidelines, WHO, USFDA and UK MHRA requirements. They are superior in airflow distribution, temperature control technology, cabinet construction and are manufactured as per cGMP regulations.

Thermolab offers a wide range of cold rooms (2°C-8°C) for stability testing of drug substances as per ICH guidelines.

Standby refrigeration system, PLC control with automatic changeover, Data logging & software connectivity intended for storage of raw material & finished good storage.



Standard Features

- Prefabricated modular structure with PUF / Rockwool insulated panels & reinforced floor panel.
- Interior Stainless Steel & Exterior PPGI / Stainless Steel.
- Adequate illumination inside the chamber.
- Racks & trays made of Stainless Steel with adjustable tray heights.
- CFC free refrigeration systems.

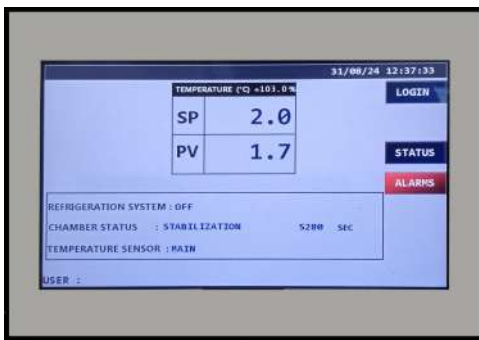
Man, Machine, Product & Environment Safety

- Safety system to cut off the power supply in case of overshoot & undershoot of Temperature conditions giving audio visual alarms.
- Additional safety thermostat to cut off the power supply in case of temperature overshoots.
- Emergency push button inside the chamber to de-energise magnetic lock with respect to door access system.
- Panic switch inside the chamber with audible alarm outside.
- Manual unlocking mechanism for door from inside the walk-in chamber.
- Environment friendly processes & refrigerant used.



Evaporating Unit

- Designed to achieve optimum energy utilization with uniform airflow condition.
- The airflow is designed to have uniform conditions throughout the chamber.
- Custom designed supply & return air ducts with sleek APU design.



Control Panel

- Newly designed control panel as per international electrical safety standards.
- PLC based control system with 7" colour HMI & front mounted compact design.
- Country specific electrical panel design to comply with local electrical standards.
- Works on 110 / 220 / 440 Volts & 50 / 60 Hz.

Documentation

Complete with IQ, OQ, PQ document, Operation & Maintenance manual.





Additional features

- Printer interface & data storage facility.
- Email & mobile alert systems.
- Ethernet communication protocol.
- Door Access Security system.
- Remote audio visual alarm.
- Accuracy
- Assured uniformity
- Standby refrigeration system
- 21 CFR compliance software
- Safety Alarm

Capacities

Standalone Cooling Cabinet

90L, 200L, 400L, 500L, 800L, 1000L, 2000L & 3000 Litres.

Walk-in Cold Room

4000L, 8000L, 12500L, 18500L, 28000L, 36000L, 50000L up to 700,000 Litres.



Note: Other Walk-In sizes are available on request.

• Flameproof Chambers :

Rockwool Insulation, Spark Proof sensors, Flame Proof blower, Flame proof light fixtures, Smoke & Gas detector & other component required to make it a complete flameproof chamber.

Detailed technical specifications of Thermolab Flame proof chambers can be provided on request.

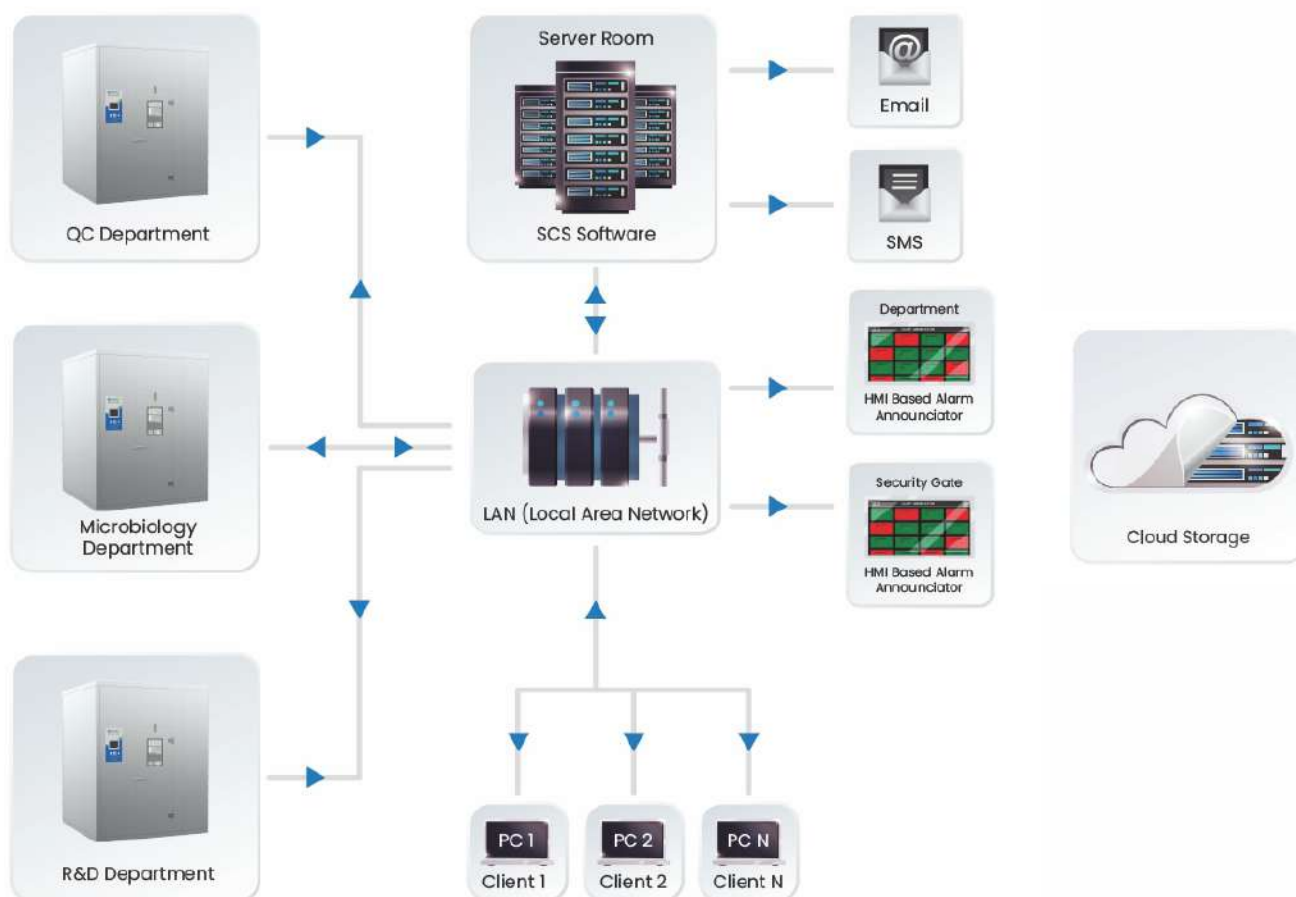


• 21 CFR Part 11 Compliant Software

21 CFR Part 11 requires that all appropriate electronic records are attributable, legible, contemporaneous, original, & accurate & maintained with integrity. Our software guarantees just that.

Salient features:

- Third party validated software
- Complies with GAMP 5 category 4
- Guaranteed Data Integrity
- Password protection
- Audit trails
- Secured electronic records
- Electronic signature
- MKT calculations
- Alarm report
- Event logging report
- Door access report
- Auto Back-up & restore facility
- Complete with IQ, OQ, PQ documents.



• Global Presence In More Than 78+ Countries



Awards

- Award for Leaders in Sustainable Stability Chambers
For reducing electrical consumption by 60% & water consumption by 90%
- Best Innovation In Sustainability
- India Design Mark Award



Certifications & Approvals



Complete after sales service provided such as installation, calibration, validation, repairs, modification & annual maintenance contracts.



This NABL accredited laboratory is equipped to carry out on site calibration & validation of various parameters like temperature, relative humidity, pressure, vacuum, dimension etc.

Thermolab Scientific Equipments Pvt Ltd.

Corporate Office:

Plot No.19/20/40/41, Vasai Municipal Industrial Area, Umela Road, Vasai (West),
Dist. Palghar - 401 207, Maharashtra, INDIA.

(M) : +91 88888 08300 (T) : +91 - 250 - 2322164, 2321627, 2310912, 2321656, 2310325 (E) : solutions@thermolabgroup.com

www.thermolabscientific.com | www.thermolabgroup.com



Unit II

Unit I

"As part of our continuous improvement program, design specifications and photographs given in this brochure are subject to change without notice and without attracting obligations for pre modification to equipment previously sold"

